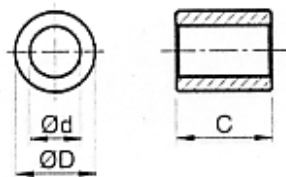
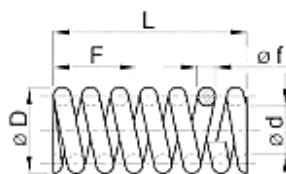


**Cilindro / Cylinder / Zylinder**


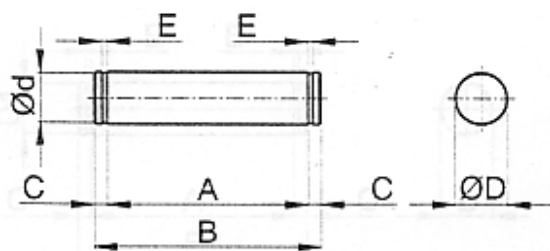
Materiale: Acciaio Zincato Giallo  
Material: Yellow-Zincked Steel  
Material: Gelb-Verzinkter Stahl

Tipo Type Typ	Cod.	Ø d	Ø D	C
DRP1	RE001620	8 <sup>+0.2</sup> / <sub>+0.1</sub>	12	9,5
DRP2/3	RE001622	10 <sup>+0.2</sup> / <sub>+0.1</sub>	16	13
DRP4	RE001624	12 <sup>+0.2</sup> / <sub>+0.1</sub>	20	17
DRP5	RE001626	20 <sup>+0.2</sup> / <sub>+0.1</sub>	30	26
DRP6	RE001628	20 <sup>+0.2</sup> / <sub>+0.1</sub>	30	67
DS5	TB001217	20,5	30	14
BRS10x16 L19	AR004704	10,2	16	19
BRS12x16 L19	AR004705	12,2	16	19
BRS16x20 L19	AR004714	16 <sup>+0.05</sup> / <sub>+0.1</sub>	20	19
BRD10x16 L37	AR004709	10,2	16	37
BRD12x16 L37	AR004710	12,2	16	37

**Molla tipo: M / Spring type : M  
Feder Typ : M**


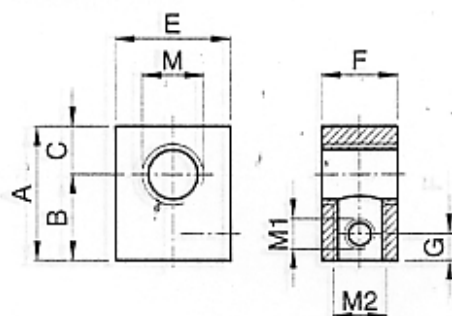
Materiale: Acciaio  
Zincato Bianco  
Material: White-Zincked  
Steel  
Material: Weiß-Verzinkter  
Stahl

Tipo Type Typ	Cod.	Ø D	Ø d	L	Ø f	F
M110	AR004110	20	14	55	3	26,5
M120	AR004113	21,6	14	60	3,8	22
M130	AR004116	25	14	60	5,5	17,4
M140	AR004119	34	19	76	7,5	23,5
M150	AR004122	49	27	102	11	33,25
M160	AR004125	70	40	128	15	28

**Perno / Pin / Zapfen**


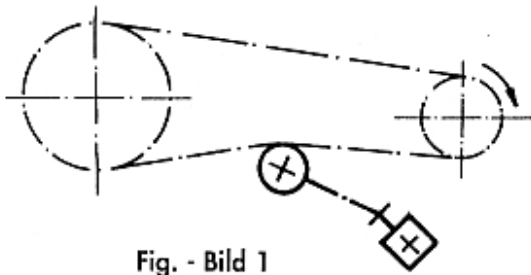
Materiale: Acciaio Zincato Giallo  
Material: Yellow-Zincked Steel  
Material: Gelb-Verzinkter Stahl

Tipo Type Typ	Cod.	A	B	C	Ø D	Ø d	E
LA10	TB001629	30 <sup>+0.3</sup> / <sub>+0</sub>	39	4,5	16	15,2	1,1
LA11	TB001630	35 <sup>+0.3</sup> / <sub>+0</sub>	44	4,5	16	15,2	1,1
LA12	TB001631	51 <sup>+0.3</sup> / <sub>+0</sub>	60	4,5	16	15,2	1,1
LA13	TB001632	56 <sup>+0.3</sup> / <sub>+0</sub>	65	4,5	16	15,2	1,1
LA14	TB001633	73 <sup>+0.3</sup> / <sub>+0</sub>	80	3,5	16	15,2	1,1
LA15	TB001634	35 <sup>+0.3</sup> / <sub>+0</sub>	45	5	20	19	1,3
LA16	TB001635	67,5 <sup>+0.3</sup> / <sub>+0</sub>	77,5	5	20	19	1,3
LA17	TB001636	105 <sup>+0.3</sup> / <sub>+0</sub>	115	5	20	19	1,3
PF110	AR004730	51,3 <sup>+0.3</sup> / <sub>+0</sub>	60	4,35	8	7,6	0,9
PF120/30	AR004731	58,5 <sup>+0.3</sup> / <sub>+0</sub>	68	4,75	10	9,6	1,1
PF140	AR004732	75,5 <sup>+0.3</sup> / <sub>+0</sub>	85	4,75	20	19	1,3
PF150	AR004733	111,5 <sup>+0.3</sup> / <sub>+0</sub>	121,5	5	30	28,6	1,6
PF160	AR004734	157 <sup>+0.1</sup> / <sub>+0</sub>	167	5	30	28,6	1,6
PF140/P	AR004735	75,5 <sup>+0.3</sup> / <sub>+0</sub>	85	4,75	12	11,5	1,1
PF150/P	AR004736	111,5 <sup>+0.3</sup> / <sub>+0</sub>	121,5	5	20	19	1,3
PF160/P	AR004737	157 <sup>+0.1</sup> / <sub>+0</sub>	167	5	20	19	1,3

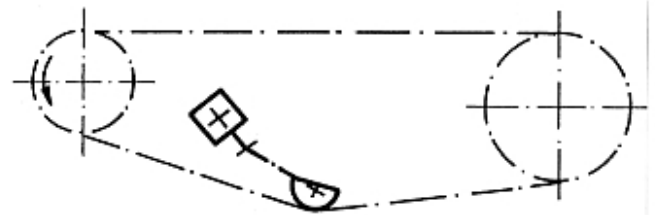
**Piastrina tipo : PI / Plate Type : PI  
Platte Typ : PI**


Materiale: Acciaio Zincato Giallo  
Material: Yellow-Zincked Steel  
Material: Gelb-Verzinkter Stahl

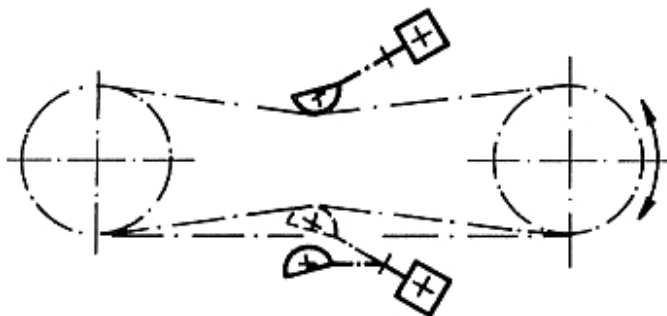
Tipo Type Typ	Cod.	A	B	C	E	F	G	M	M1	M2
PI10 M8	AR004059	30	20	10	20	15	7	M8	M8	M10
PI10/20/30 M10	AR004060	30	20	10	20	15	7	M10	M8	M10
PI10/20/30 M16	AR004063	30	20	10	30	15	7	M16	M8	M10
PI40 M12	AR004066	35	22,5	12,5	30	20	7	M12	M8	M14
PI40 M16	AR004069	35	22,5	12,5	30	20	7	M16	M8	M14
PI50 M16	AR004075	45	30	15	45	30	7	M16	M8	M20
PI50 M20	AR004078	45	30	15	45	30	7	M20	M8	M20
PI60 M20	AR004081	50	35	15	50	35	10	M20	M8	M24

**Esempi di applicazione / Examples of application / Anwendungsbeispiele**


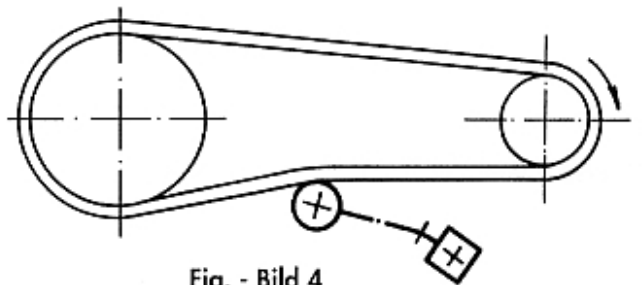
**Fig. - Bild 1**  
Tendicatena  
Chain stretcher  
Kettenspanner



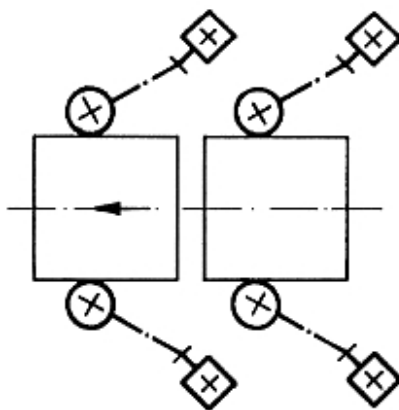
**Fig. - Bild 2**  
Tendicatena interno  
Internal Chain stretcher  
Interner Kettenspanner



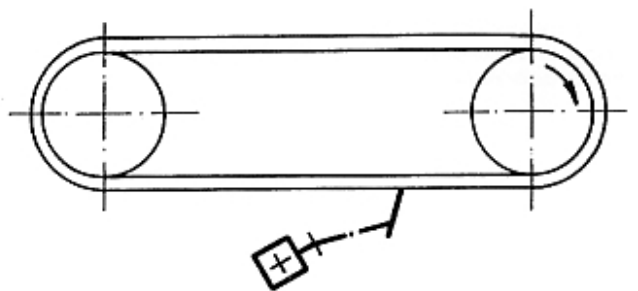
**Fig. - Bild 3**  
Doppio tensionamento per movimenti reversibili  
Double stretching for reversible movements  
Doppelte Spannung für umkehrbare Bewegungen



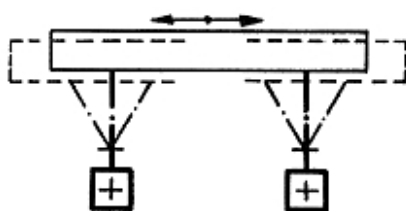
**Fig. - Bild 4**  
Tendinghia  
Belt stretcher  
Riemenspanner



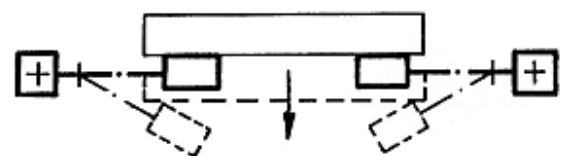
**Fig. - Bild 5**  
Elementi di pressione o convogliamento  
Pressure or conveyor elements  
Druk- oder Fördererelemente



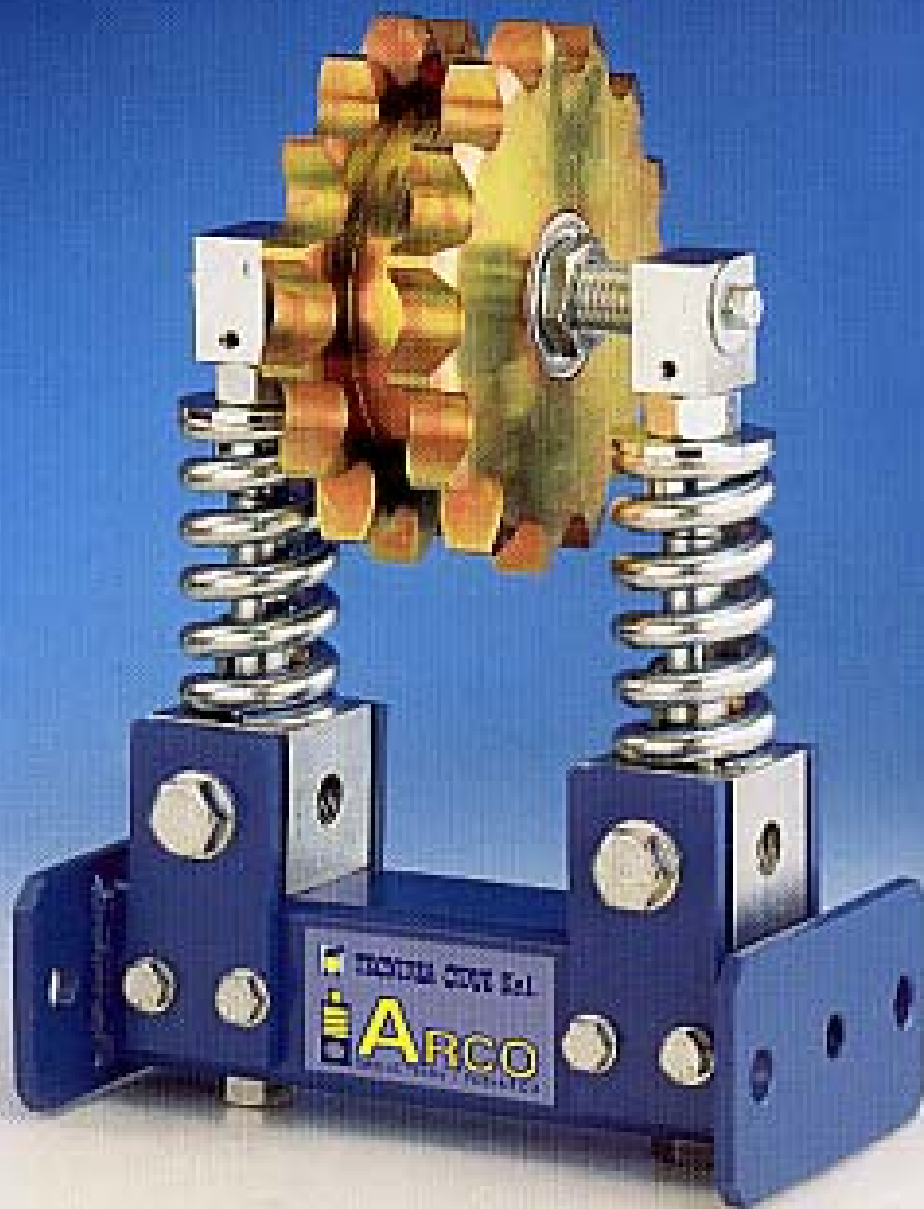
**Fig. - Bild 6**  
Supporto per raschietto  
Support for scraper  
Schaberhalterung



**Fig. - Bild 7**  
Supporto elastico di un piano oscillante  
Elastic support for oscillating plane  
Elastische Halterung einer schwingenden Ebene



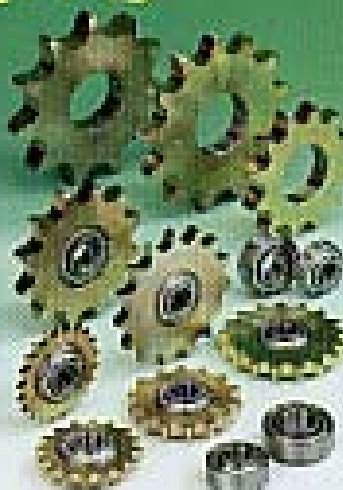
**Fig. - Bild 8**  
Sospensione elastica  
Elastic suspension  
Elastische Federung



**MIX**



**PTC**



**PUNZONI AUTOMATICI PLOC**



La Tecnidea CIDUE S.r.l. produce e commercializza ogni tipo di accessori per la lavorazione delle leghe di alluminio e magnesio, in particolare per la produzione di parti in stampo.

Conosciamo ed abbiamo fatto da più di 40 anni. Per questo possiamo garantire un servizio clienti che è sempre pronto ad aiutarvi in ogni situazione.

Per il servizio Clienti e informazioni visitate il sito [www.tecnidea.com](http://www.tecnidea.com) o chiamate il numero verde 800 90 90 90. Per le vendite e per informazioni sui prodotti visitate il sito [www.tecnidea.com](http://www.tecnidea.com) o chiamate il numero verde 800 90 90 90.