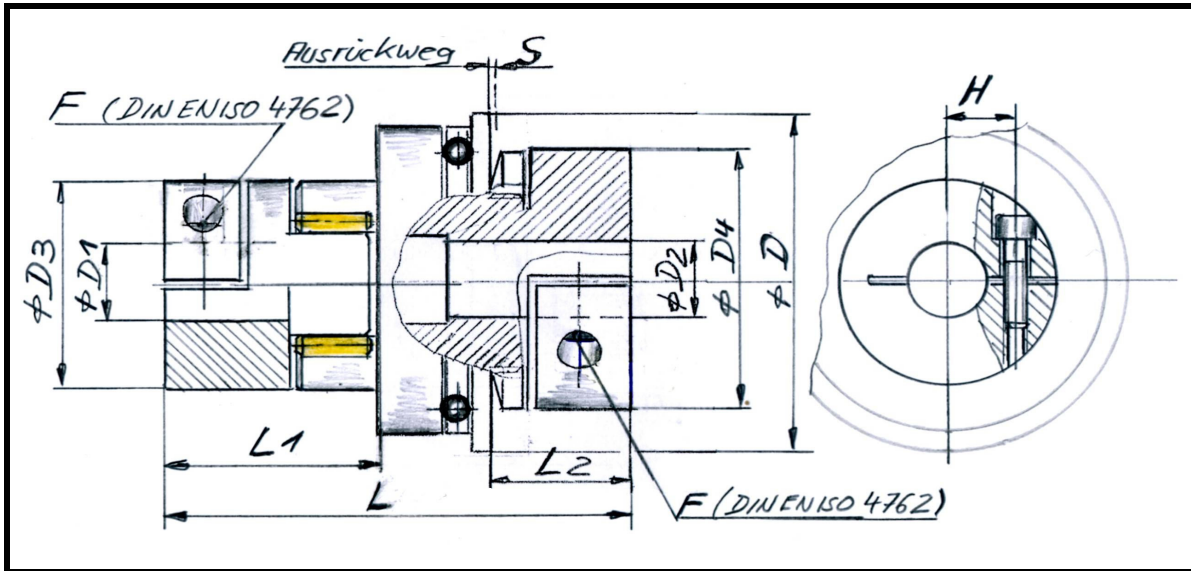


# Safety Coupling Type KBK/EK



Dimensions [mm]

Type	D	L	D1	D2	D3	D4	H	F	L1	L2	S
KBK/EK-14	50	75	4 - 14	6-19	30	40	15,5	M 4	16	20	0,7
								5,1			
KBK/EK-19	65	100	10 - 20	10-20	40	56	24,5	M 6	25	22	1,2
								15			
KBK/EK-24	75	115	15 - 28	14-23	55	66	29	M 8	30	28	1,2
								36			
KBK/EK-28	95	142	19 - 35	20-35	65	82	33,5	M 10	33	42	2,0
								72			
KBK/EK-38	115	160	20 - 45	32-40	80	110	38	M 12	38	38	2,0
								125			
KBK/EK-42	128	195	28 - 45	35 - 50	95	122	42	M 12	42	56	2,0
								125			

## Permissible Misalignment

Size	14	19	24	28	38	42
radial [mm]	0,06	0,06	0,08	0,1	0,11	0,12
axial [mm]	1,2	1,2	1,3	1,4	1,5	1,8
angular [°]	0,9	0,9	0,9	0,9	0,9	0,9

## Technical Ratings

Type	Overload Torque adjustable		Maximum Speed n 1/ min	Weight m kg	Torque insert T Nm	Moment of inertia J kgcm <sup>2</sup>
	Range 1 M Nm	Range 2 M Nm				
KBK/EK 14	3 - 7	5 - 10	11690	0,3	12,5	1,4
KBK/EK 19	5 - 15	10 - 19	8950	0,5	17	3
KBK/EK 24	12 - 35	20 - 60	7630	0,7	60	5,4
KBK/EK 28	50 - 130	65 - 150	6030	1,4	160	9,7
KBK/EK 38	60 - 200	100 - 300	4980	2,2	325	23
KBK/EK 42	80 - 250	200 - 500	4440	4,6	450	80

\* Range 3: 0,4 - 2 Nm

Keyways optional :

according to standard DIN 6885

Materials:

Insert made of polyurethan Sh 98 A

Hubs up to size 38 made of aluminium alloy

Hubs larger than size 38 made of steel

Temperature Range:

minus 30 °C to 90 °C

Customized solutions:

on request

alternative shore hardness 92 A or 64 D

Order Code: KBK/ EK 24 - 16H7 - 14H7 - 20 Nm - C - 2

Type; size

Bore 1

Bore 2

Disengagement torque

C = single position engagement

( D = multiposition engagement )

Overload torque range